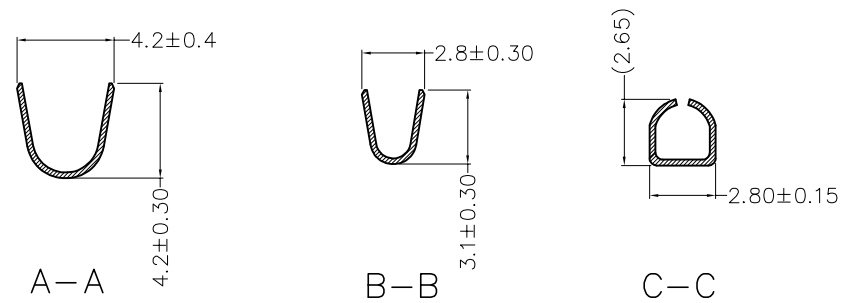
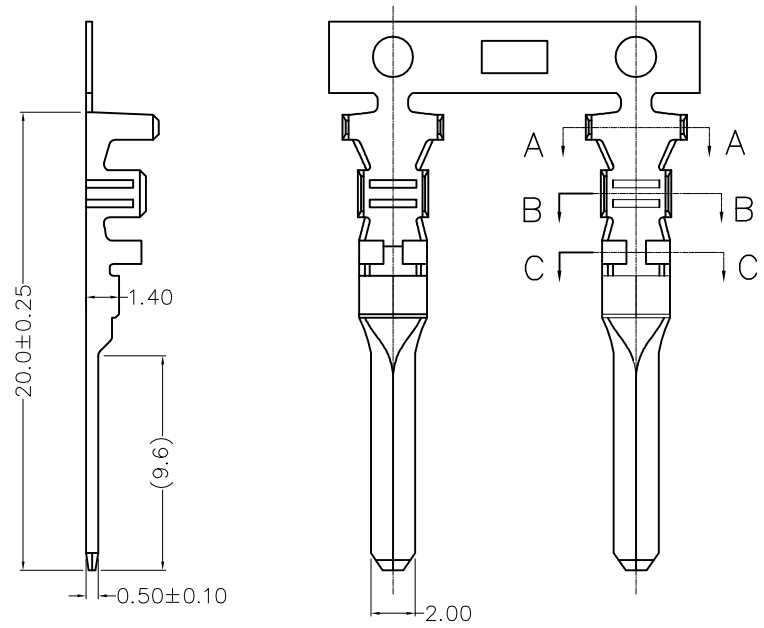


1 2 3 4 5 6 7 8

REV	LOCATIONS	DESCRIPTION	DATE	REVISER	APPD
1		Structure and size optimization	27/OCT/23	MATT	LEO

Electrical  
 Current Rating: 6~10A AC/DC  
 Voltage Rating: 300V AC/DC  
 Contact Resistance: 20mΩ Max  
 Insulation Resistance: 1000MΩ Min  
 Withstanding Voltage: 1500V AC/minute  
 Temperature Range—Operating: -25°C~+85°C  
 Wire Range: 22AWG~16AWG(0.52~1.32mm<sup>2</sup>)  
 Insulation O.D.: 15~3.1mm  
 Material  
 Housing: Phosphor Bronze  
 Applicable Housing: FHG45006 Series



Ordering Information

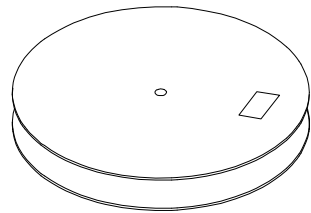
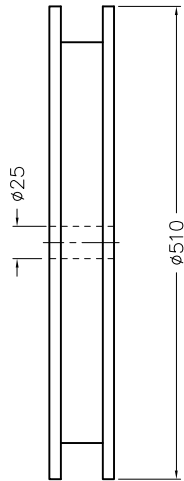
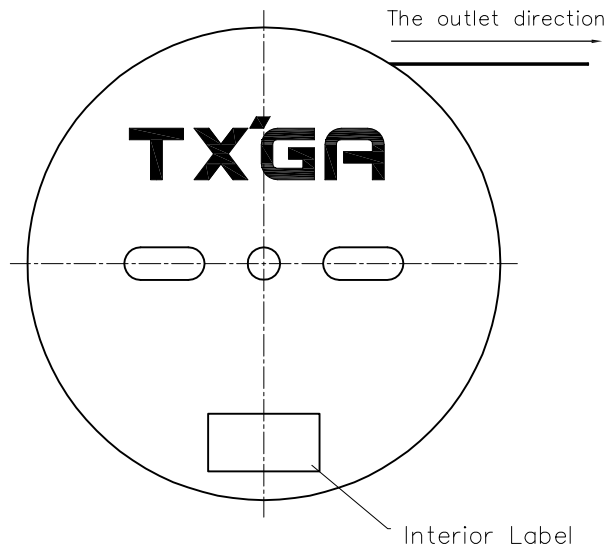
FT 450 06 — M X H  
 1 2 3 4 5 6

1	Category	2	Series Number	3	Distinction No.	4	Type	5	Plating	6	Packaging
	FT-Terminal		450-Pitch4.50mm		06		M-Male		1-Gold Flash 2-Tin Plated		H-Paper Axis

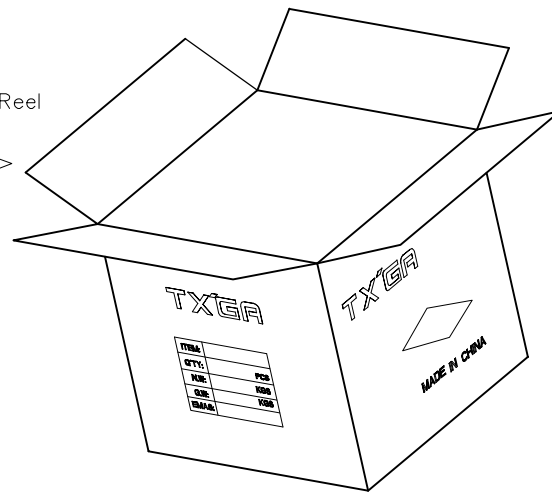
THIRD ANGLE PROJECTION  DESIGN UNITS METRIC  SCALE 5:1  SIZE A4	GENERAL TOLERANCES (UNLESS SPECIFIED)		APPROVE BY LEO	DATE 30/JAN/22	PART NO. FT45006-MXH	ITEM NO. FT45006	<b>TXGA</b> Building Technology Cornerstone
	X. ±0.30	X.* ±5°	CHECKED BY GISELLE	DATE 30/JAN/22	TITLE Wire to Board Pitch 4.5mm(Terminal)		
	X.X ±0.20	X.X* ±2°	DRAWN BY MATT	DATE 30/JAN/22	THIS DRAWING CONTAINS INFORMATION THAT IS PROPRIETARY TO TXGA INDUSTRIAL ELECTRONICS(S.Z)CO.,LTD AND SHOULD NOT BE USED WITHOUT WRITTEN PERMISSION		SHEET NO. 1/2
	X.XX ±0.15	X.XX* ±1°					
X.XXX ±0.10	X.XXX* ±0.5°						

1 2 3 4 5 6 7 8

REV	LOCATIONS	DESCRIPTION	DATE	REVISER	APPD



5,000 Pcs/Reel



<p>THIRD ANGLE PROJECTION</p>	GENERAL TOLERANCES (UNLESS SPECIFIED)		APPROVE BY	DATE	PART NO.	ITEM NO.	<p>Building Technology Cornerstone</p>
	X. ±0.30	X.* ±5°	LEO	30/JAN/22	FT45006-MXH	FT45006	
DESIGN UNITS METRIC	X.X ±0.20	X.X* ±2°	CHECKED BY	DATE	TITLE		REV 1
SCALE	X.XX ±0.15	X.XX* ±1°	GISELLE	30/JAN/22	Wire to Board Pitch 4.5mm(Terminal)		
SIZE	X.XXX ±0.10	X.XXX* ±0.5°	DRAWN BY	DATE	THIS DRAWING CONTAINS INFORMATION THAT IS PROPRIETARY TO TXGA INDUSTRIAL ELECTRONICS(S.Z)CO.,LTD AND SHOULD NOT BE USED WITHOUT WRITTEN PERMISSION		
5:1	A4		MATT	30/JAN/22			